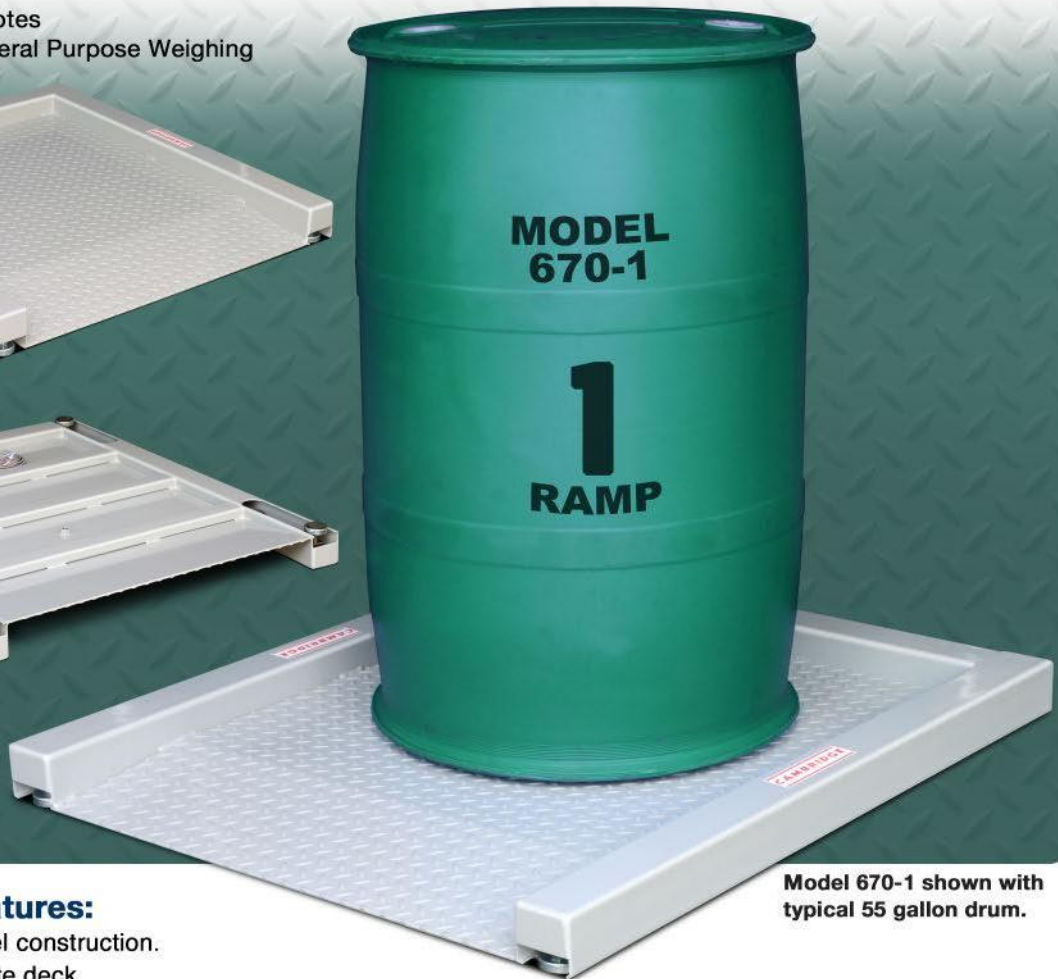
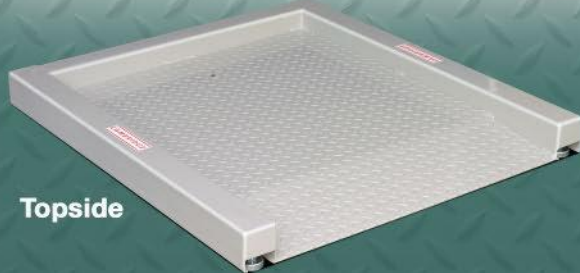


C A M B R I D G E

MODEL 670-1 BARREL WEIGHER SCALES

Applications:

- Barrels • Drums • Totes
- Super Sacks • General Purpose Weighing



Model 670-1 shown with typical 55 gallon drum.

Model 670-1 Features:

- Structural tubular steel construction.
- Anti-skid diamond plate deck.
- 100% End loading capacity.
- 150% Overload protection.
- 20 Foot indicator cable.
- Eye bolt holes allow easy set-up.
- Shielded load cell and indicator cables.
- Ultra-low profile (1.5" above the floor).
- Live side rails to weigh oversized loads.
- 1 Part in 5000 accuracy.
- Live built-in easy incline ramp.
- Shock load protection.
- (4) Internally mounted, Environmentally protected, NTEP certified-5000 Division, Class III/IIIL, IP 67 water resistant rated shear beam load cells.
- Easy access leveling.



The strength of tubular steel construction creates a scale that will handle oversized loads with ease. "Live" side rails are a value added feature which greatly increases the versatility and capability of our 670 series scales.

Approvals:



SONICH INDUSTRIAL SALES CO., INC.
CLEVELAND, OHIO
(440) 546-1170 Fax (440) 546-9141
www.sonichindustrial.com
Email: sales@sonichindustrial.com

Members:

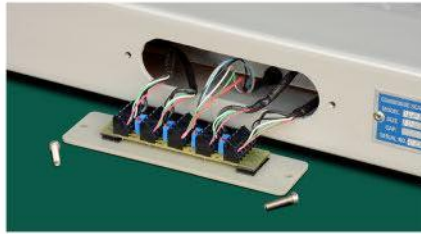
- THE NATIONAL CONFERENCE ON WEIGHTS AND MEASURES
- THE INTERNATIONAL SOCIETY OF WEIGHING AND MEASUREMENT

C A M B R I D G E

MODEL 670-1 BARREL WEIGHER SCALES



The Cambridge Scale Works, Inc. Model 670-1 utilizes four load cells with adjustable leveling feet pocketed in the scale frame for durability and accuracy.



The 670-1 junction board permits easy access for occasional adjustments. The junction board wiring and load cell wires are protected within the tubular steel frame of the scale.

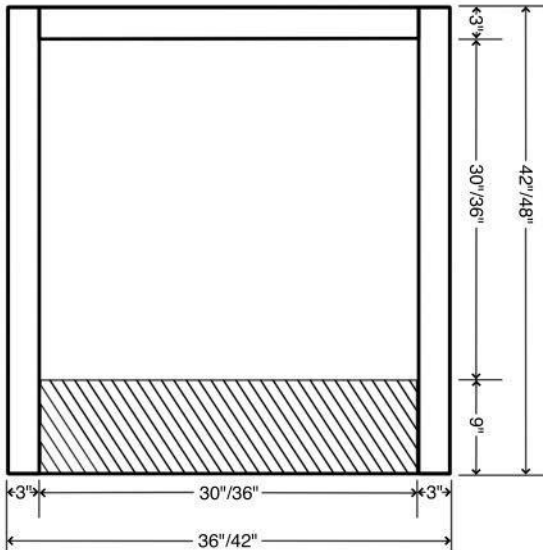


All Cambridge Scale Works barrel weighers feature easy access to leveling feet making installation and adjustments quick and simple.

OVERALL SIZE	PLATFORM SIZE	CAPACITY	APPROX. SHIP WT.
36" x 42"	30" X 30" X 1.5"	1,000 lbs. X .2	200 lbs.
36" x 42"	30" X 30" X 1.5"	2,500 lbs. X .5	200 lbs.
36" x 42"	30" X 30" X 1.5"	5,000 lbs. X .1	220 lbs.
42" x 48"	36" X 36" X 1.5"	1,000 lbs. X .2	265 lbs.
42" x 48"	36" X 36" X 1.5"	2,500 lbs. X .5	265 lbs.
42" x 48"	36" X 36" X 1.5"	5,000 lbs. X .1	295 lbs.

Consult factory for custom sizes and capacities • Specifications subject to change without notice

Model 670-1 Dimensions:



Model 670-1 Options:



Smooth deck plate



SS, hermetically sealed and/or "FM" approved load cells



Remote Stainless Steel NEMA 4X junction box

Model 670-1 Accessories:



48" Indicator column (Freestanding)



Lag down brackets (sold individually)



Cambridge offers a full line of high quality, made in the USA indicators.

Note: If portability or affixed Indicator Column are required, consult Cambridge Model: 670-P Series in the Portable section of your catalog.

Distributed By:

SONICH INDUSTRIAL SALES CO., INC.
 CLEVELAND, OHIO
 (440) 546-1170 Fax (440) 546-9141
 www.sonichindustrial.com
 Email: sales@sonichindustrial.com

Cambridge Scale Works, Inc. will warrant this product for one full year against defects in material and/or workmanship.