

Summit Series

SJ5048



Control Chief has established a new standard in the wireless industrial control market. This radio is an outstanding value, featuring a compact, 5-speed, dual joystick transmitter and a full complement of safety features. The pre-wired receiver makes installation and setup simple.

Key Features

- Operation range up to 330 ft.
- Eliminates need for crane operator located in cab
- Lightweight transmitter insures ease of operation
- Pre-wired receiver for quick installation
- Multi-operator "first come, first serve operation"
- Puts operator in total control of equipment from the plant floor
- Receiver and transmitter are completely programmable*
- Receiver and transmitter enclosure: NEMA 4 (IP65) glass reinforced nylon
- Up to 40 hours of battery life under continuous use with 4 AA batteries
- Up to 5-speed - 4 motion capabilities
- 2-year warranty



General Specifications

- Phase lock loop (PLL)
- Power source and output relay fuse protection
- Synchronous transmission encoding and decoding
- Programmable battery saving auto-off feature*
- More than 57 function and parameter settings*
- 16 self-diagnostic audible and visual alarm codes
- Operation frequency: 430 ~ 435 MHz fully compliant with FCC Part 15 & CE European directive (**non-licensed system**)
- Hamming Codes: ≥ 4 bits (error-control coding)
- > 65,000 unique ID Codes for maximum security
- Programmable continuous or non-continuous transmission*
- Transmission frequency manual or auto selection*
- 5-100 KHz channel spacing programmable*
- Auto signal searching
- Programmable inching function*
- Operating temperature: $-30^{\circ}\text{C} \sim +75^{\circ}\text{C}$
- Response time = 65 ms
- 7 programmable power-on options*
- 256 operating channels
- Antenna impedance 50 ohms
- Programmable 5 step output feature*
- Programmable acceleration time delay*
- Relays rated 10A @ 250V & 8A @ 30VDC

* Factory programming required

Safety

The wireless technology incorporates the latest advancements in RF and microprocessor design. Such features as watchdog error circuitry, output relay monitoring, FDDI (Frequency Deviation Deflection Indicator), and programmable password protection* all insure safe wireless operation of your equipment. Most of all, wireless technology removes the operator from harm's way. The operator can choose the safest and most convenient operating position, thus greatly reducing the risk of injury.

Support

All products are backed by Control Chief's years of experience in the material handling market. All items are stocked and shipped from our US factory. Our team of qualified engineers are ready to provide you prompt professional service whenever and wherever you need it.

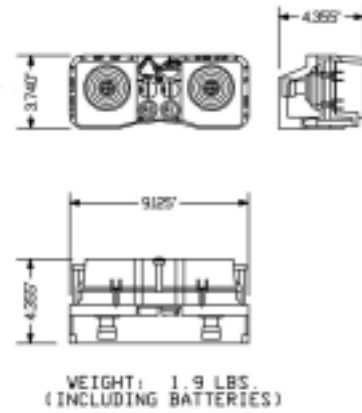
Reliability

Extensive use of SMT technology and advanced digital technology reduces the part count and simplifies design. Single board transmitter and receiver designs reduce interconnections and enhance reliability. All circuitry is shock-proof mounted within a rigid glass filled nylon enclosure for long service life. This commitment to reliability is backed by a 2-year warranty, the best in the industry.

Transmitter Specifications

- 3 stage audible and visual low power warning
- Internal audible and visual alarm
- Removable magnetic key (water resistant)
- Shock resistant design impact durability to 50G
- 4 digit password protection*
- Modulation $\leq 2.5\text{KHz}$; narrow band F.M.
- RF output power $\leq 10\text{ mW}$
- Large pushbutton E-stop switch
- Internal antenna
- 4 AA batteries
- Two dual axis joysticks
- A-B-Both selector
- Approximate power consumption: $<32\text{mA}$
- Wide selection of pushbutton symbols
- OPTION: Receiver is programmable from ground through RF communication (no need to climb on crane to change frequency or function)

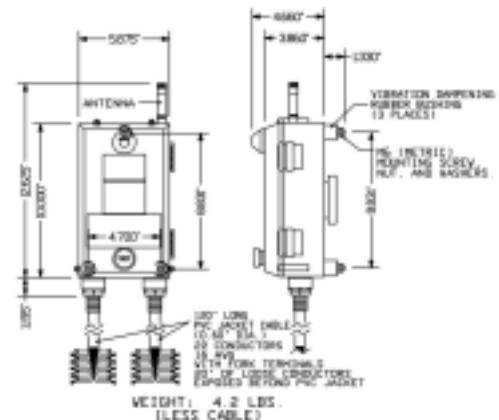
Transmitter Dimensions



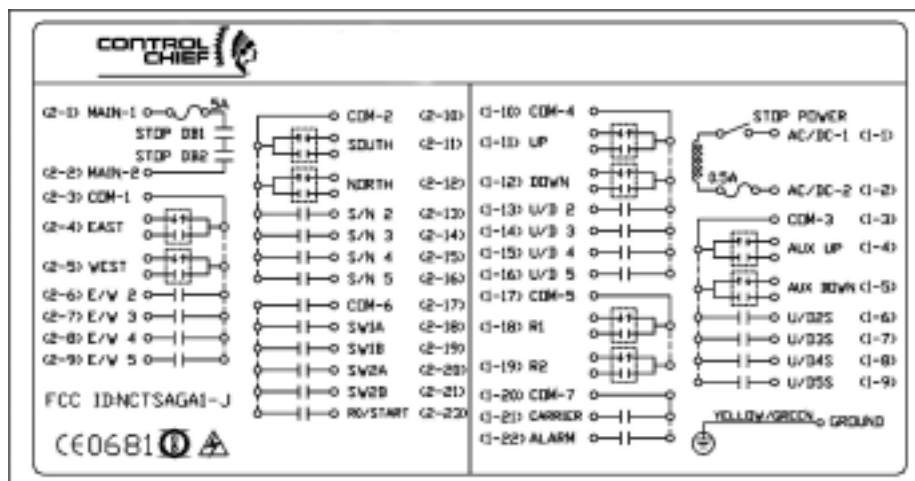
Receiver Specifications

- 2 programmable alarm modes and signal LED output display*
- Power interruption protection
- Relay's contact failure detection circuit
- Shock resistant mounting provision, impact durability up to 20G
- External integrated antenna
- Enhanced watchdog circuit
- Triple superheterodyne
- FDDI (Frequency Deviation Detection Indicator) tracing circuit
- Sensitivity: \leq to -110dBm
- Adjacent channel restrain $> 80\text{dB}$
- Supply voltage 115/230/380 50/60 Hz $\pm 10\%$
- Signal alarm, light and E-stop button included on front cover

Receiver Dimensions



Wiring Diagram



CONTROL CHIEF CORPORATION
 200 Williams Street, P.O. Box 141 Bradford, PA 16701
 1-800-233-3016 814-362-6811 FAX: 814-368-4133
www.controlchief.com

